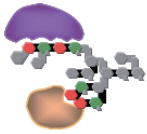
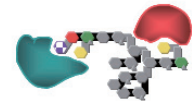


GP Bio Sciences Ltd.



Global Leader for Glycan Analysis



We contribute to Fundamental research, Diagnosis, Drug development and Medical treatment fields by elucidating biological functions of glycans through analyses of those expressed on cell surfaces and/or expressed on secreted proteins by using Lectin Microarrays.

Development of Antibody drugs and Therapeutic proteins

Evaluation by a trace amount of culture supernatant. Evaluation of the structural differences among medicines.



Basic research of Regenerative medicine

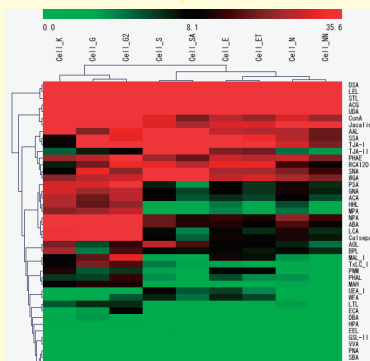
Evaluation of hES, iPS and mesenchymal stem cells. Research of differentiation and cancerous changes of cells. Living cell surface glycome profiling.

Glycan Profiling System GlycoStation™

- Lectin Microarray : LecChip™
- Evanescent-field Excitation Scanner : GlycoStation™ Reader 1200
- Analysis Software : GlycoStation™ Tools Pro

Biomarker discovery

Glyco-biomarker screening for cancer, inflammation, immunity deficiency disease, etc.



Basic research of glycan

Easy and high sensitive glycan profiling which doesn't require cutting off glycans from carrier proteins nor purifying.

- Glycan profiling with 45 kinds of lectins.
- High sensitive measurement from 10ng sample (in glycoprotein weight).

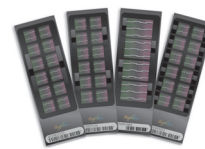
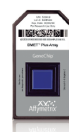
- Simultaneous profiling both of N- and O-glycan structures.
- Liquid measurement enables to monitor weak bio-molecular interactions.

Other Services



Gene Expression · SNPs analysis service

The next generation sequencing service
Protein analysis service with 4000 QTRAP LC-MS/MS



As for these services, please ask Gene Analysis Business Group

Contract Analysis Service: GlycoStation™

Contract Analysis Service

We can offer several plans in order to meet various needs of glycan analyses. We are flexible to meet your requirements.

(We can offer discount price depending on the number of samples.)

AS-01

Full Service Plan including a comparative analysis report

A detailed comparative analysis report is provided, in addition to raw data taken by lectin microarrays. This is the most suitable plan for the first-time users of lectin microarrays.

AS-02

Basic Plan

In this case, interpretation of glycan profiling data must be done by users. Only raw data taken by lectin microarrays are provided. Only in the first order, we recommend you to purchase an analysis software (GlycoStation Tools Viewer Ver.1.0: 45,000 JPY) for interpreting your data by yourself. This is the most suitable plan for users who wish to use a number of lectin microarrays periodically, because you can develop a number of glycan data saving your budget.

AS-07

Cell Surface Marker Analysis Plan

This is a plan to analyze glycoproteins extracted from cells with lectin microarrays statistically. A report showing a list of lectins, which are sensitive to cell types, and those glycan binding information is provided by using clustering and principal component analyses.

AS-08

Cell Statistical Analysis Plan

This is a cost effective plan of the Cell Surface Marker Analysis One. Clustering and principal component analysis results are provided in addition to raw data.

Protein solutions: prepare samples with a protein concentration at 50 µg/ml and over, and with sample amount of 500 µL and over. Use PBS as buffer. Cultivated Cells: prepare cells more than 10⁶, wash well with PBS to remove culture media, and make cell pellets. (These sample amounts are required to confirm the protein concentrations.) Please ask us at any rate as sample pre-treatment changes case by case.

System Installation Plan

We recommend to install GlycoStation into your facility, if you wish to run many samples and/or in case that you cannot send samples to outside. (Please ask us for details.)

System Rental Plan (RS-01)

We recommend to use a rental plan of GlycoStation, if you wish to run a number of samples in a short term. We can offer the most appropriate price plan according to your requirement for installing GlycoStation into your facility. (Please ask us for details.)



Evanescent-field Fluorescence
Excitation Scanner
GlycoStation™ Reader 1200

Specs

Light source	Metal halide lamp: 350W ¹⁾	External connection	USB x3, LAN (1000M) x1, VGA x1,
Excitation wavelength	531nm (Cy3-correspondence) ²⁾	Input voltage	AC100 ~ 240V
Measurement time	2min/chip (exposure time: 133msec)	Power consumption	Main unit: 650W, Light source: 450W
Exposure time	33 ~ 499msec	Dimensions	W440xD592xH585 (mm)
Camera gain	50 ~ 125	Light source	W170xD340xH225 (mm)
Data format	16bitTIFF, JPEG, Bitmap	Weight	Main unit: 70kg, Light source: 8.5kg
Indication of lamp used time	every 500h		

1) Light Source Lifetime: ~1500h (60% of the initial intensity) 2) Measurement wavelength is adjustable by changing an optical filter.



Inquiries

GP Biosciences Ltd.

Keihin Operation Center: 1-3-3 Azamino-minami, Aoba-ku,
Yokohama 225-0012, Japan

TEL: 045-913-5803 FAX: 045-511-8570 E-mail: info@gpbio.jp

Head Quarter: 3-2-5-406, Minami-kyujo nishi, Chuo-ku,
Sapporo 064-0809, Japan

TEL: 011-206-1456 FAX: 011-206-1457 HP: www.gpbio.jp/english/

